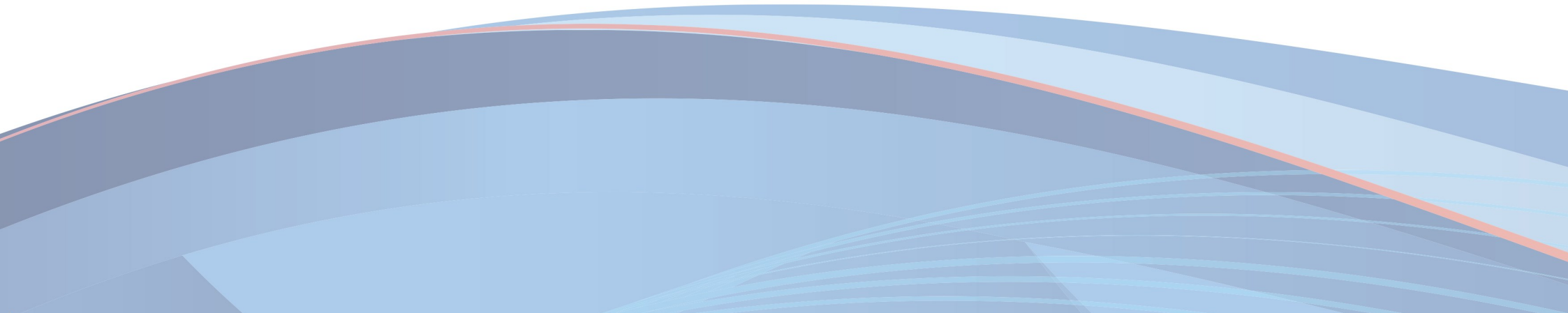




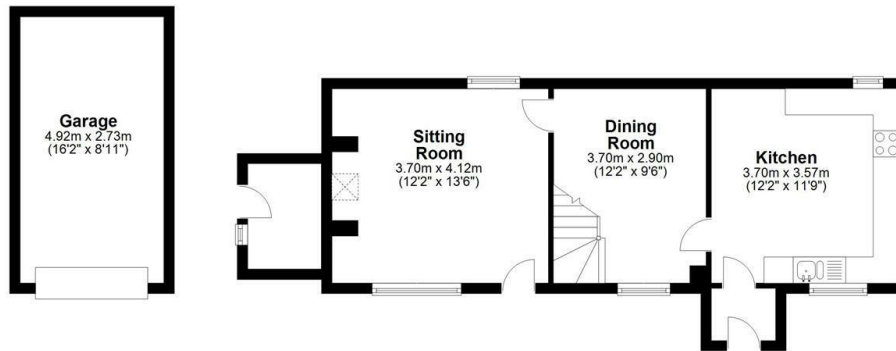
Hutchins Cottage Church Street, Andover, SP11 0AX
By Auction £570,000



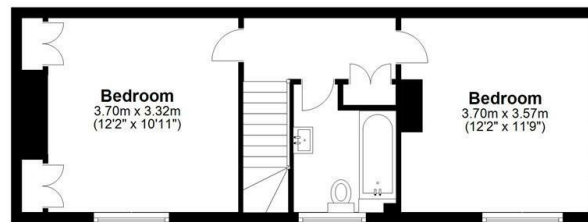




Ground Floor



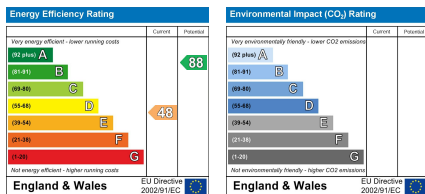
First Floor



Total area: approx. 97.9 sq. metres (1054.3 sq. feet)

FOR EXCLUSIVE USE BY MYDDELTON MAJOR ESTATE AGENTS

Plan for illustration only. Windows and doors are approximate. Whilst care is taken preparing this plan, please check details before making decisions reliant upon them.
Measured and drawn to RICS guidelines
COPYRIGHT CLEARPLANZ



33 London Street Andover Hampshire SP10 2NU

01264 316000

www.myddeltonmajor.co.uk

Myddelton & Major for themselves and for the vendors or lessors of this property whose agents they are give notice that: – i) the particulars are set out as a general outline only for the guidance of intended purchasers or lessees, and do not constitute part of an offer or contract.

ii) all descriptions, dimensions, reference to condition and necessary permissions for use and occupation, and other details are given without responsibility and any intending purchasers or tenants should not rely on them as statements or representations of fact, but must satisfy themselves by inspection or otherwise as to the correctness of each of them. iii) no person in the employment of Myddelton & Major has any authority to make or give any representation or warranty whatever in relation to this property.